



RETAIL SPACE AVAILABLE

915 E. Lincoln Lane, Gardner, KS

FOR
LEASE



LEASE RATE: \$17.50/SF NNN | 2,900 SF

DEMOGRAPHICS

	1 mile	3 miles	5 miles
Estimated Population	9,694	23,531	29,852
Avg. Household Income	\$72,596	\$82,625	\$87,498

- White box delivery
- New construction
- Join Urgent Care Facility and Enterprise Rent-A-Car
- Parking 8/1,000



CLICK HERE TO VIEW MORE LISTING INFORMATION

For More Information Contact:

GREG ROBERTS | 816.412.7384 | groberts@blockandco.com

Exclusive Agent





RETAIL SPACE AVAILABLE

915 E. Lincoln Lane, Gardner, KS

FOR
LEASE



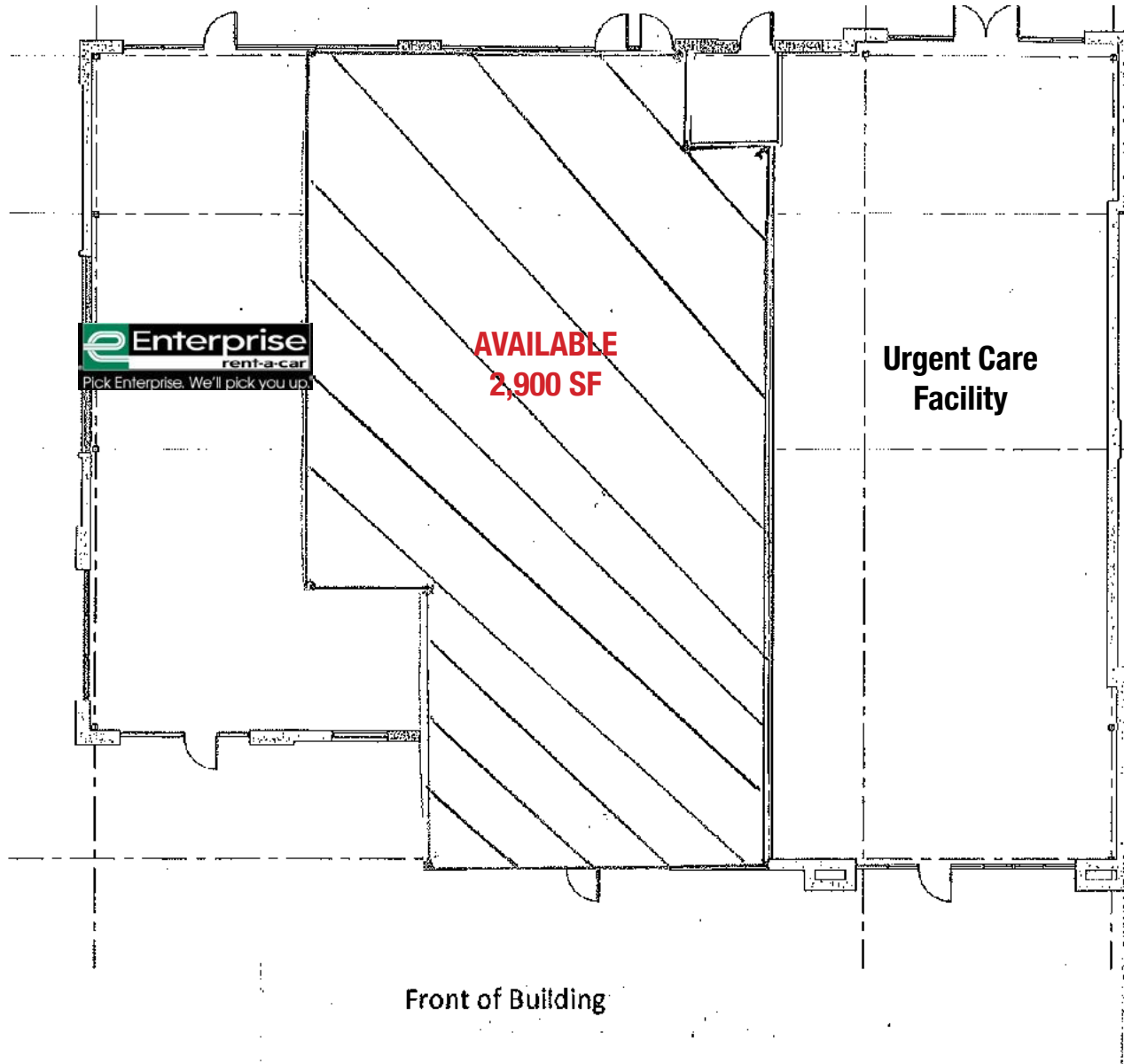


RETAIL SPACE AVAILABLE

915 E. Lincoln Lane, Gardner, KS

FOR
LEASE

FLOOR PLAN



ELEVATIONS

KEYNOTES

- LINE OF ROOF BEYOND.
- MFL AWNING.
- FABRIC AWNING.
- LIGHT, RE, ELEC.
- SIGNAGE BY TENANT.
- DISTRIBUTION EQUIP., RE, MEP.
- EIFS REVEAL.
- PREFIN DOWNSPUT.
- PLANTING, RE, L101.

NORTH ELEVATION J1

EAST ELEVATION G1

SOUTH ELEVATION D1

WEST ELEVATION A1

FINISH SCHEDULE

SEALANT COLORS: MATCH COLOR OF ADJACENT MATERIAL BEING SEALED - WHEN 2 OR MORE COLORS ARE ADJACENT, MATCH LIGHTER-COLORED MATERIAL.

FINISH	MATERIAL	NOTES
AW-1	AWNING FABRIC, MFR STANDARD COLOR SELECTION, NAVY BLUE	
BR-1	BRICK VENEER, ACME BRICK, AMARETTO, VELOUR, KING	
BR-1	BRICK VENEER, ACME BRICK, KO-KO BROWN, VELOUR, MODULAR	
EF-1	EXTERIOR INSULATION FINISH SYSTEM, MATCH SHERWIN WILLIAMS COLOR, NEUTRAL GROUND	DRAINAGE EIFS SYSTEM
EF-2	EXTERIOR INSULATION FINISH SYSTEM, MATCH SHERWIN WILLIAMS COLOR, FAVORITE TAN	DRAINAGE EIFS SYSTEM
EF-3	EXTERIOR INSULATION FINISH SYSTEM, MATCH SHERWIN WILLIAMS COLOR, RAME	DRAINAGE EIFS SYSTEM
EP-1	EXTERIOR PAINT, SHERWIN WILLIAMS COLOR, #7046 ANONYMOUS	PREFINISHED METAL TO MATCH
MT-1	PREFINISHED METAL FLASHING, MATCH SHERWIN WILLIAMS COLOR: #7046 ANONYMOUS	
SP-1	PREFINISHED ALUMINUM STOREFRONT, KAWNEER, 426 LIGHT BRONZE	
ST-1	NATURAL STONE VENEER, STURDIS MATERIALS, CAVANAL	
ST-2	PRECAST STONE, WATER TABLE, COLOR NATURAL	

NOTES:

- VERIFY FINISH SELECTIONS WITH OWNER PRIOR TO PURCHASE OR INSTALL.
- MANUFACTURER'S COLORS, LISTED FOR DESIGN REFERENCE. FINAL COLORS TO BE SELECTED FROM SELECTED MANUFACTURER'S STANDARD SAMPLES.
- REFER TO SECTIONS AND DETAILS FOR ADDITIONAL INFORMATION.

LUXE ARCHITECTS

DATE: 10.4.2017
PAUL PECK - ARCHITECT

PROJECT: 6825 SHELL
NEW MULTI-TENANT RETAIL SHELL
915 E. LINCOLN LANE
GARDNER, KS 66030

DATE	DESCRIPTION
10/17/17	FOR COMMENTS

EXTERIOR ELEVATIONS

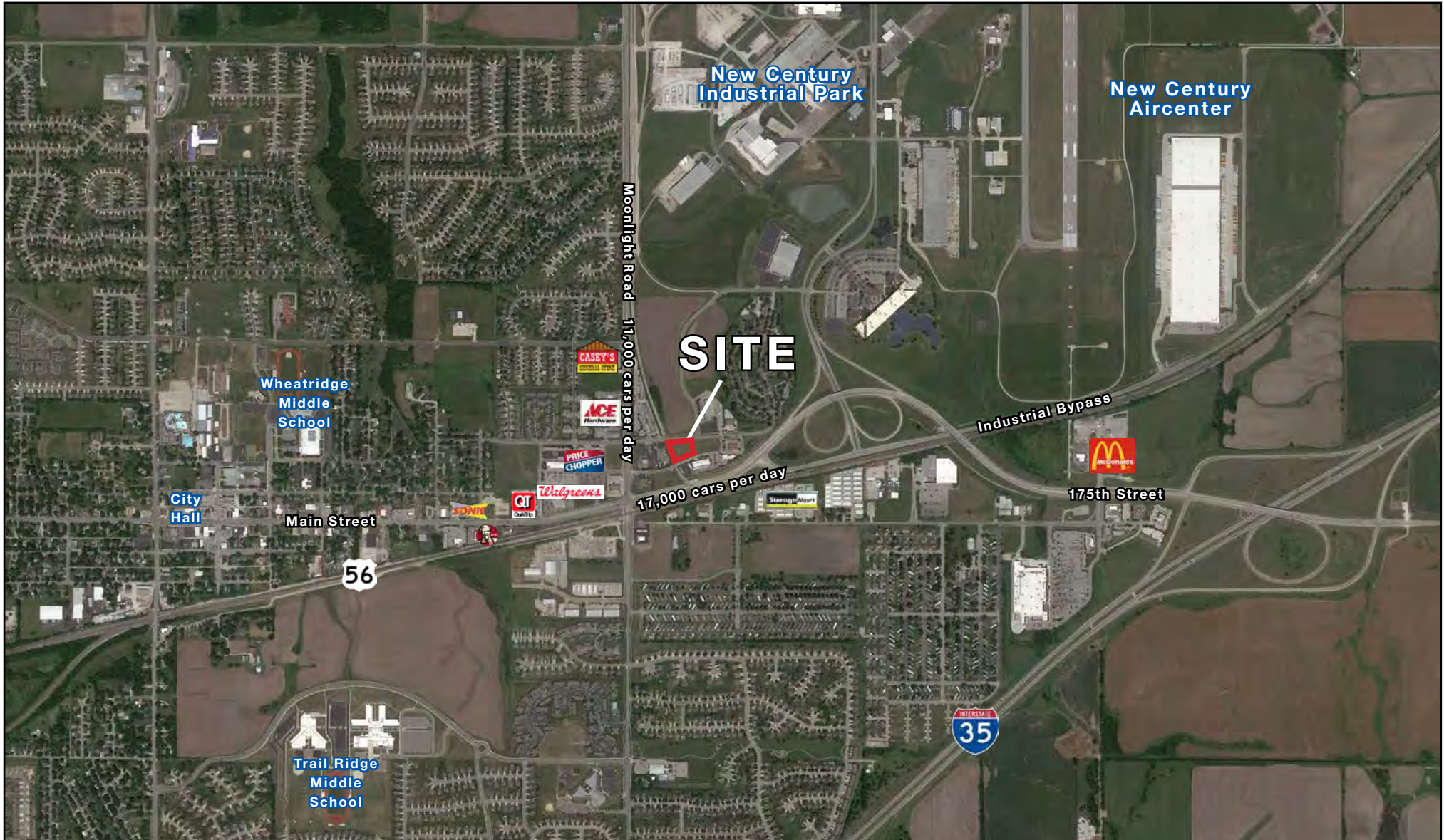
PROJECT NUMBER: 17011
APPROVED BY: PFP
SHEET ORIGIN: 10.4.17
© 2016 Luxe Architects, LLC. All rights reserved. No part of this document may be reproduced or transmitted in any form without the prior written authorization of Luxe Architects, LLC.
SHEET NUMBER: **A201**

RETAIL SPACE AVAILABLE

915 E. Lincoln Lane, Gardner, KS

FOR
LEASE

AERIAL

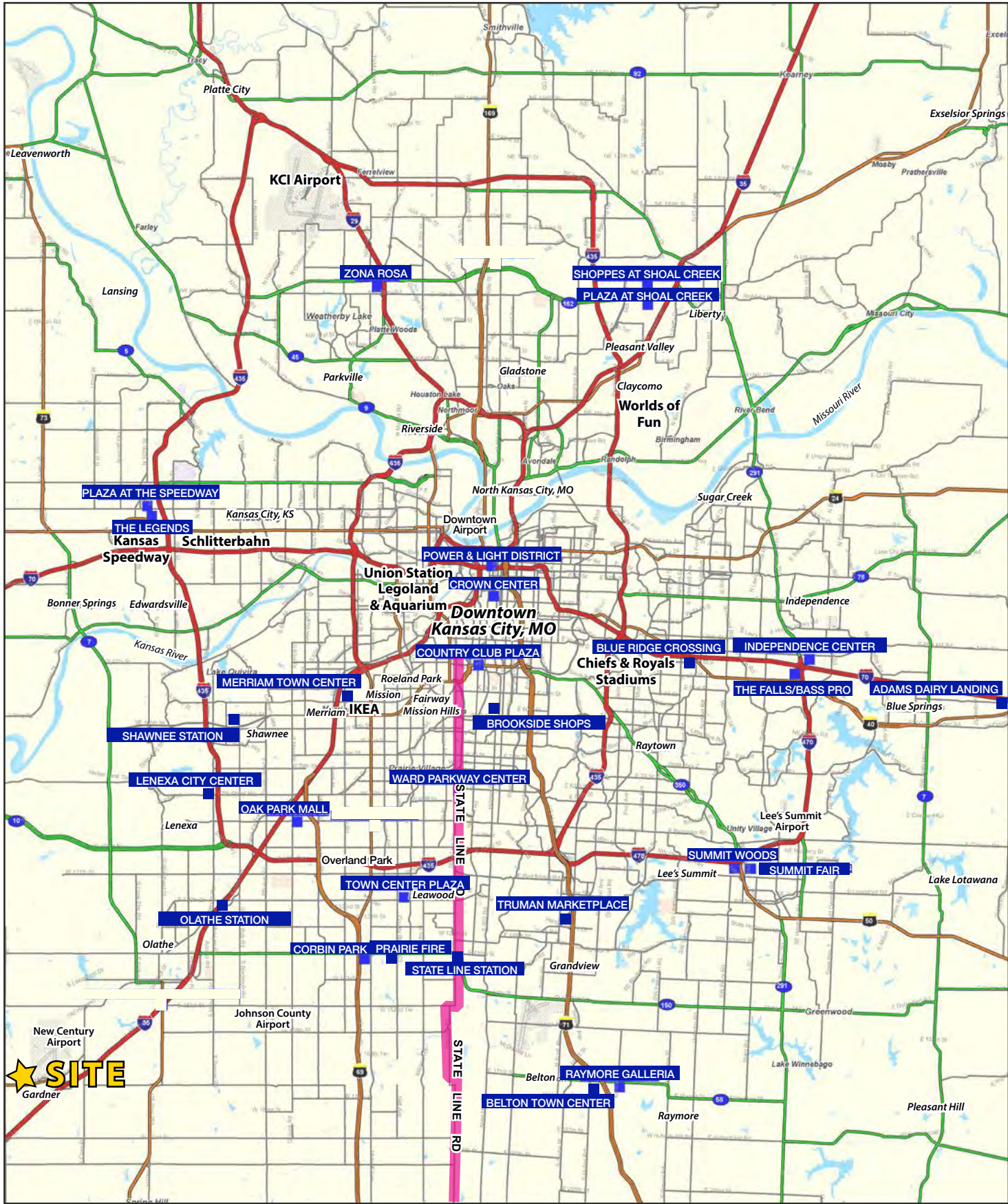




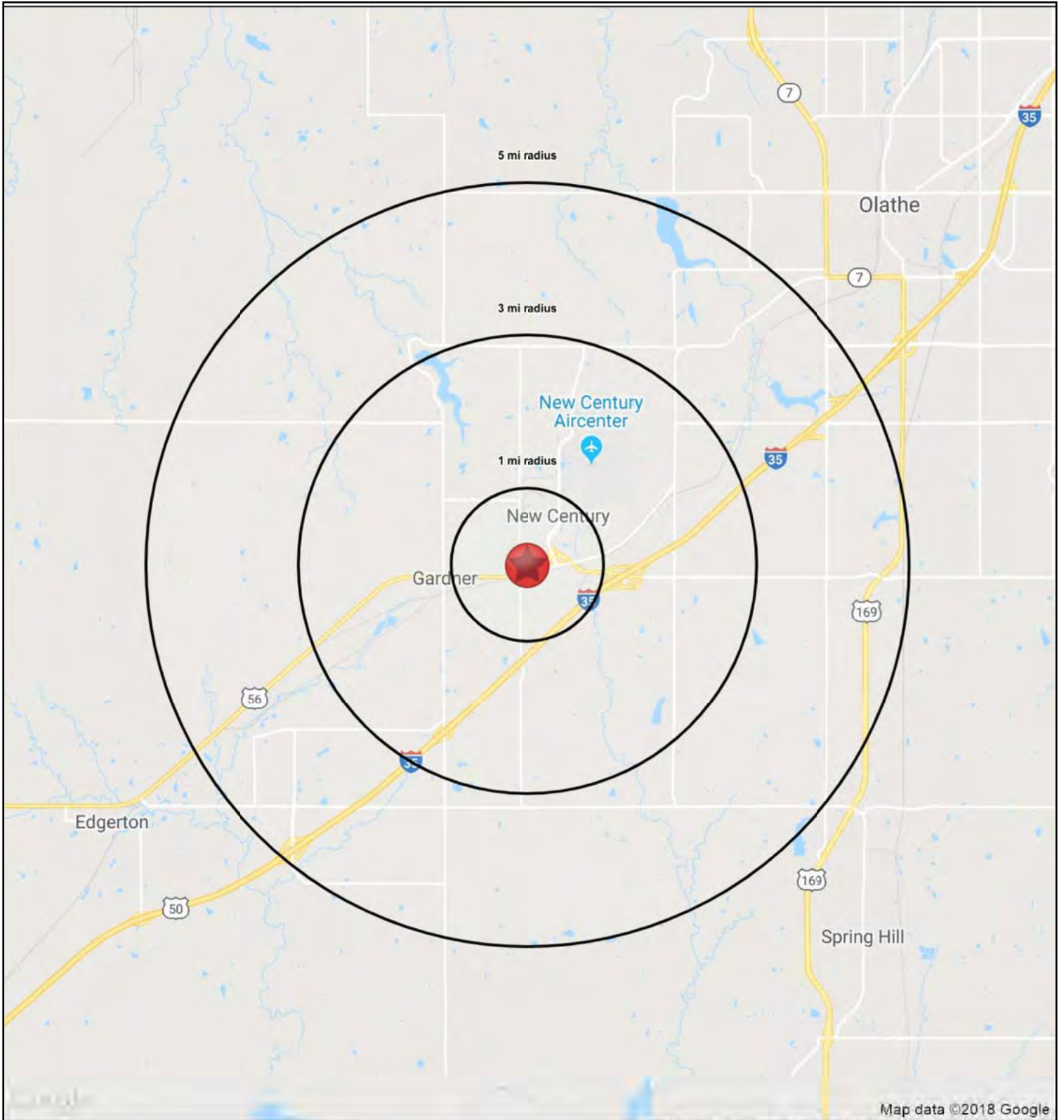
RETAIL SPACE AVAILABLE

915 E. Lincoln Lane, Gardner, KS

FOR
LEASE



All information furnished regarding property for sale or lease is from sources deemed reliable, but no warranty or representation is made as to the accuracy thereof and the same is subject to errors, omissions, changes of prices, rental or other conditions, prior sale or lease or withdrawal without notice.





RETAIL SPACE AVAILABLE

915 E. Lincoln Lane, Gardner, KS

**FOR
LEASE**

915 E. Lincoln Lane Gardner, KS 66030		1 mi radius	3 mi radius	5 mi radius
POPULATION	2018 Estimated Population	9,694	23,531	29,852
	2023 Projected Population	10,341	24,924	31,540
	2010 Census Population	8,904	20,793	25,968
	2000 Census Population	5,233	10,811	13,538
	Projected Annual Growth 2018 to 2023	1.3%	1.2%	1.1%
	Historical Annual Growth 2000 to 2018	4.7%	6.5%	6.7%
	2018 Median Age	29.6	31.6	32.7
HOUSEHOLDS	2018 Estimated Households	3,411	8,170	10,371
	2023 Projected Households	3,664	8,714	11,031
	2010 Census Households	3,025	6,977	8,726
	2000 Census Households	1,816	3,787	4,690
	Projected Annual Growth 2018 to 2023	1.5%	1.3%	1.3%
	Historical Annual Growth 2000 to 2018	4.9%	6.4%	6.7%
RACE AND ETHNICITY	2018 Estimated White	86.3%	87.0%	87.3%
	2018 Estimated Black or African American	4.1%	4.6%	4.4%
	2018 Estimated Asian or Pacific Islander	3.1%	2.6%	2.6%
	2018 Estimated American Indian or Native Alaskan	0.6%	0.6%	0.5%
	2018 Estimated Other Races	6.0%	5.2%	5.1%
	2018 Estimated Hispanic	8.0%	6.7%	6.5%
INCOME	2018 Estimated Average Household Income	\$72,596	\$82,625	\$87,498
	2018 Estimated Median Household Income	\$67,259	\$74,755	\$80,047
	2018 Estimated Per Capita Income	\$25,919	\$29,383	\$31,070
EDUCATION (AGE 25+)	2018 Estimated Elementary (Grade Level 0 to 8)	1.2%	1.1%	1.2%
	2018 Estimated Some High School (Grade Level 9 to 11)	5.0%	4.1%	4.0%
	2018 Estimated High School Graduate	24.5%	23.5%	22.5%
	2018 Estimated Some College	26.0%	25.6%	25.2%
	2018 Estimated Associates Degree Only	10.4%	10.1%	10.1%
	2018 Estimated Bachelors Degree Only	23.5%	25.1%	26.0%
	2018 Estimated Graduate Degree	9.3%	10.5%	11.0%
BUSINESS	2018 Estimated Total Businesses	261	521	774
	2018 Estimated Total Employees	2,992	7,581	12,539
	2018 Estimated Employee Population per Business	11.4	14.5	16.2
	2018 Estimated Residential Population per Business	37.1	45.1	38.6

